

IN PURSUIT OF *YOUR CURE*.™

Dr. Sophia George, PhD
Associate Professor
Division of Gynecologic Oncology
Cancer Control Program
Sylvester Comprehensive Cancer Center
Miller School of Medicine

www.hboclabs.com



@sophialge



A Cancer Center Designated by the
National Cancer Institute

**PhD, Molecular and Medical Genetics
2001-2008**



UNIVERSITY OF
TORONTO



Laurentian University
Université Laurentienne

**BSc. Hons, *cum laude*
1998-2001**



University
Health
Network

**Post-doc, Hereditary Ovarian
Cancer (Cell biology and genetics)
2009-2014**



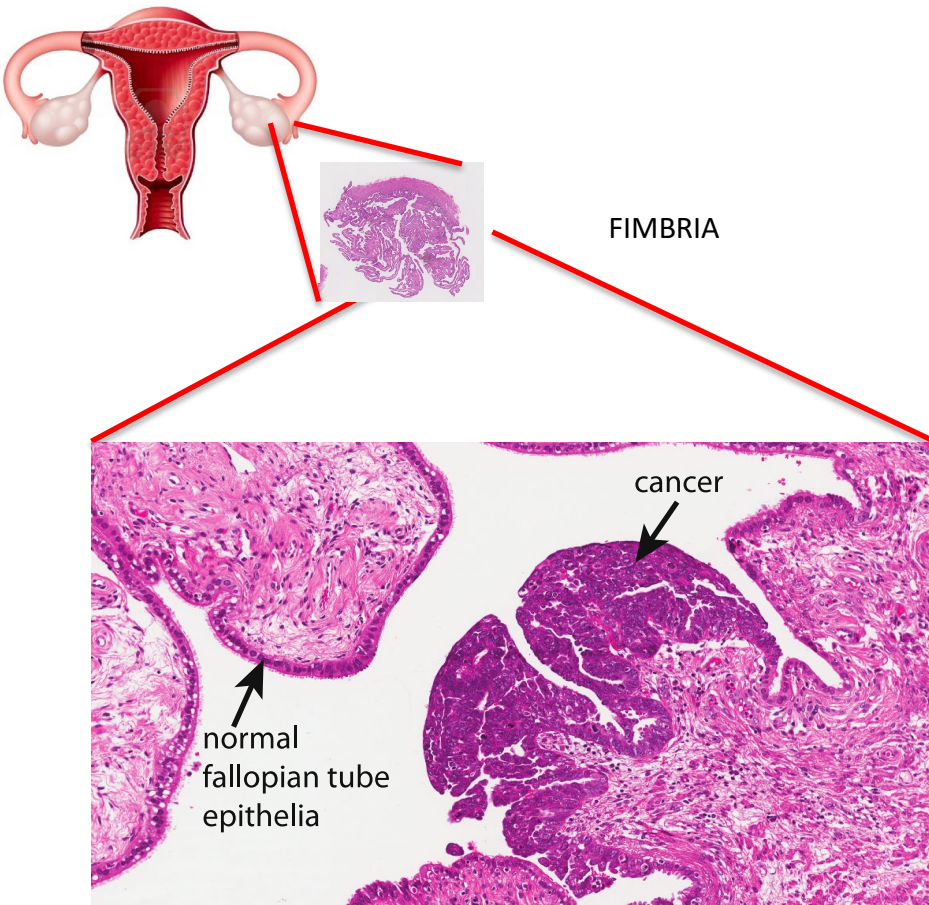
**2nd post doc,
Biochemistry of High-
risk breast cancer, 2015
NIH-NCI Cure ~6months**



**Research Assistant Professor
September 2015, 5yr package
Salary for 2 staff, equipment
3yr, 100%, tapered 50%**



IN PURSUIT OF YOUR CURE.™

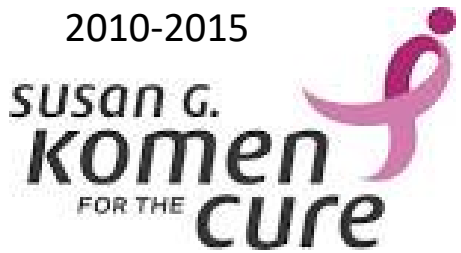


2009

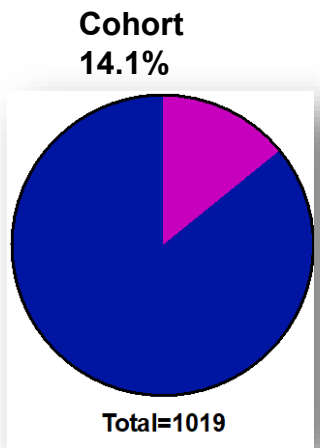
- Study hereditary ovarian cancer syndrome (hereditary breast and ovarian cancer syndrome)
- The study of fallopian tubes in women with a heterozygous mutation in BRCA1 and/or BRCA2
- Helped write, manage and co-lead a DOD – Ovarian Cancer Consortium Grant (institutions : John Hopkins, MSK, Yale, UHN). Awarded 2010-2016 (2017-18)

Prevalence of Inherited Breast and Ovarian Cancer

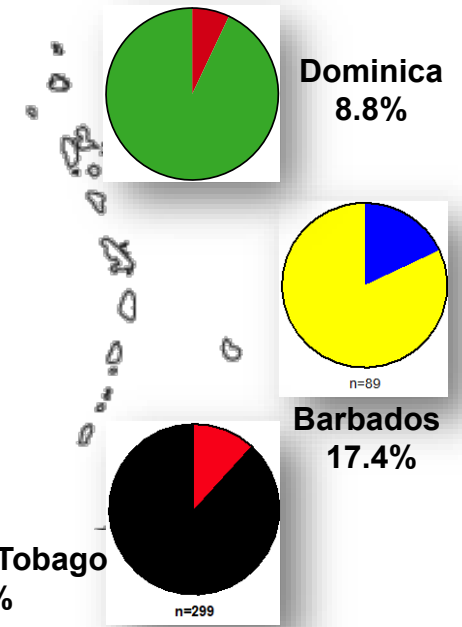
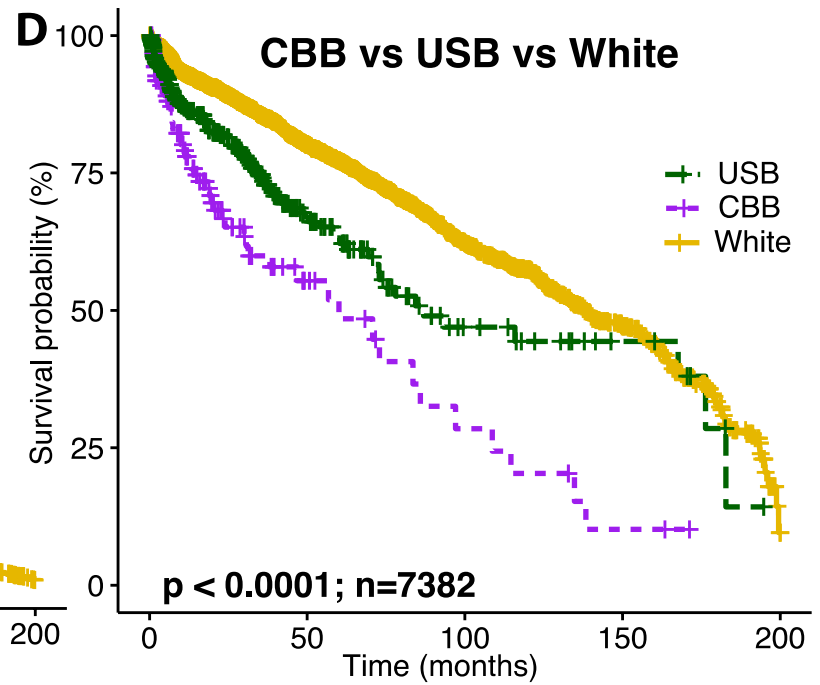
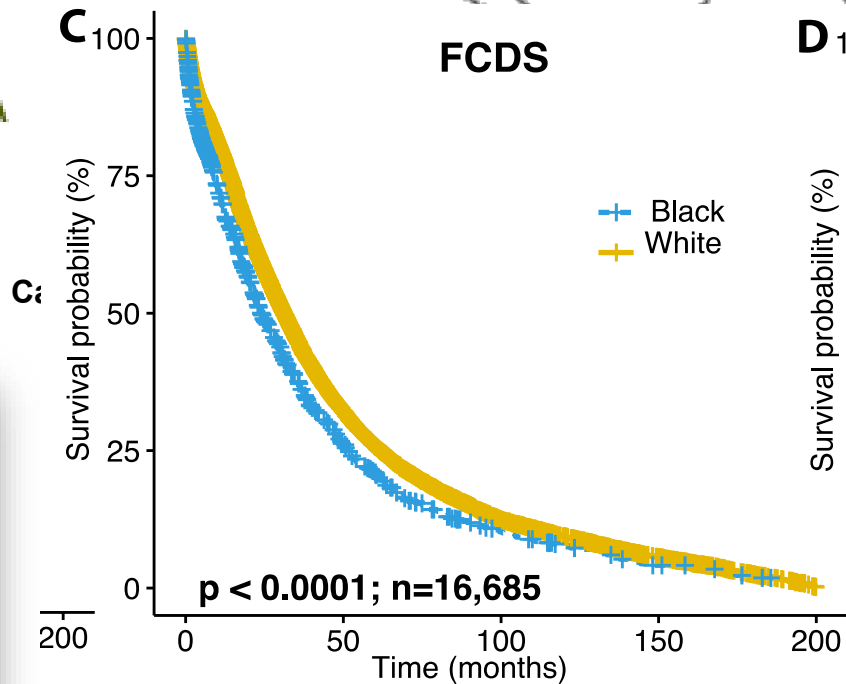
2010-2015



2017



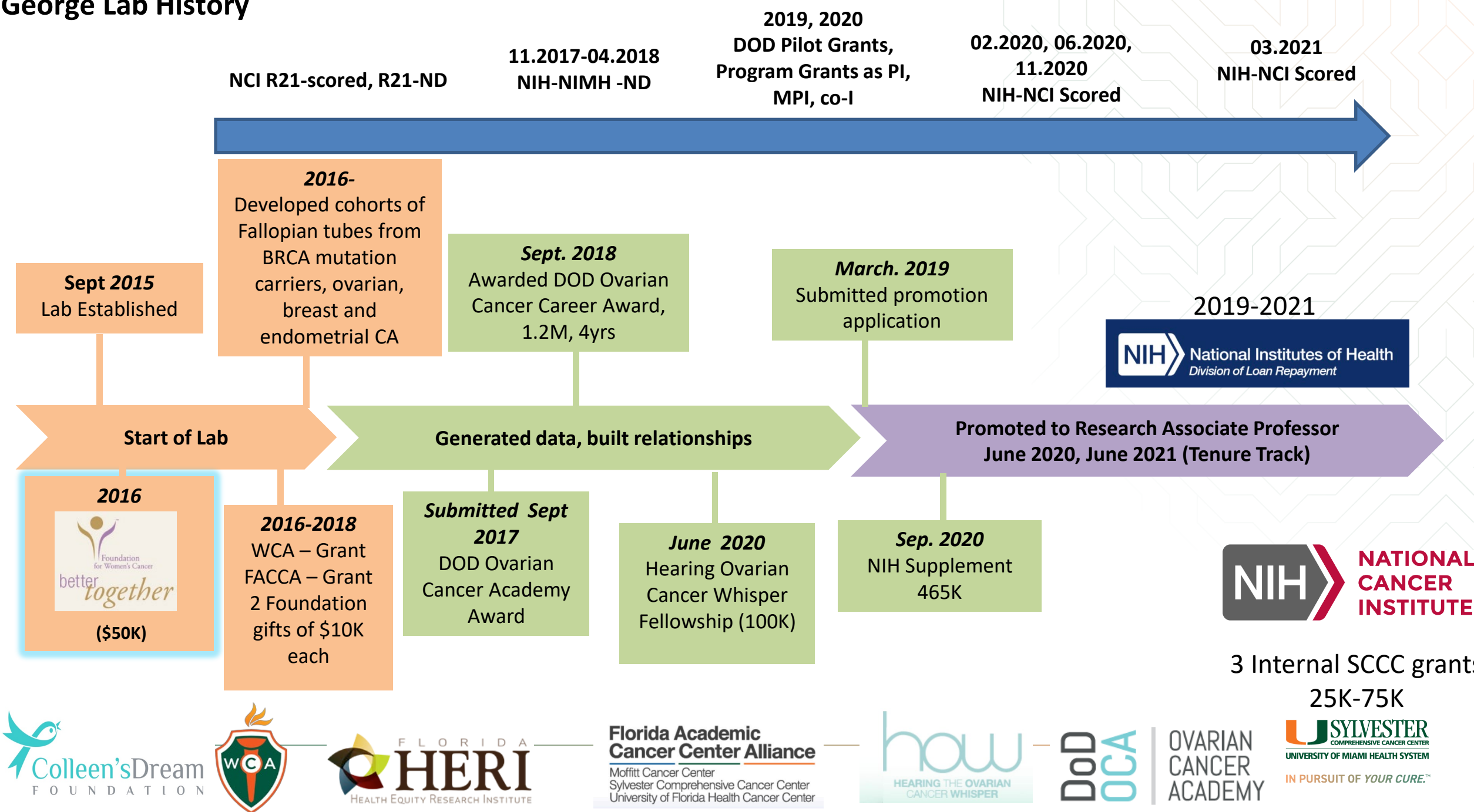
The Bahamas
23%



Funding

- Learn how to manage your start-up and grants funds.
- Meet with your financial officer – yearly (if not more often).
- Identify foundations that support your type of work
- <https://research.jhu.edu/rdt/funding-opportunities/early-career/>
- <https://trialelect.com/>
- <https://cdmrp.army.mil/funding/> (20 different programs)
- <https://wellcome.org/grant-funding>
- Philanthropy!!

George Lab History



Mentorship – be intentional

IDENTIFY:

- Champion/Advocate (vouch for you)
- Cheerleader
- The master crafter (planning and navigation)
- Sponsor (opening doors)
- Peer mentors
- Meet with your Department Chair annually



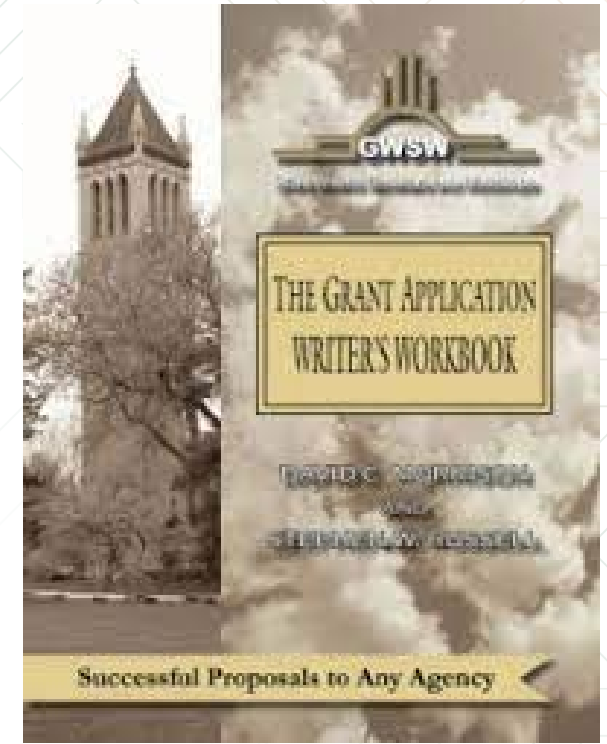
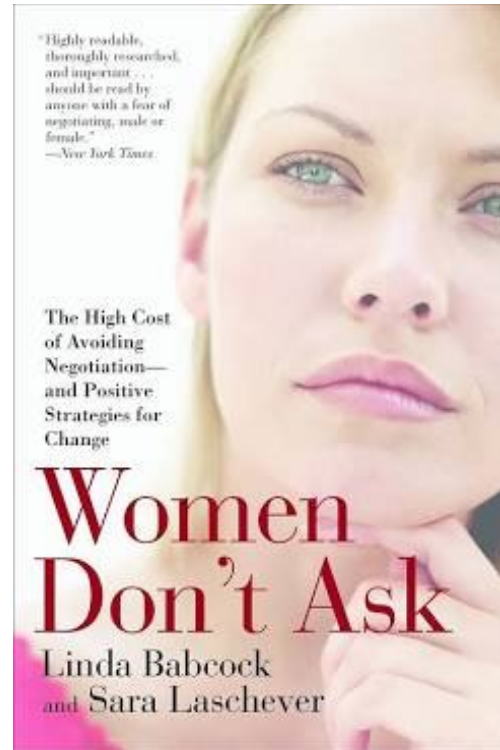
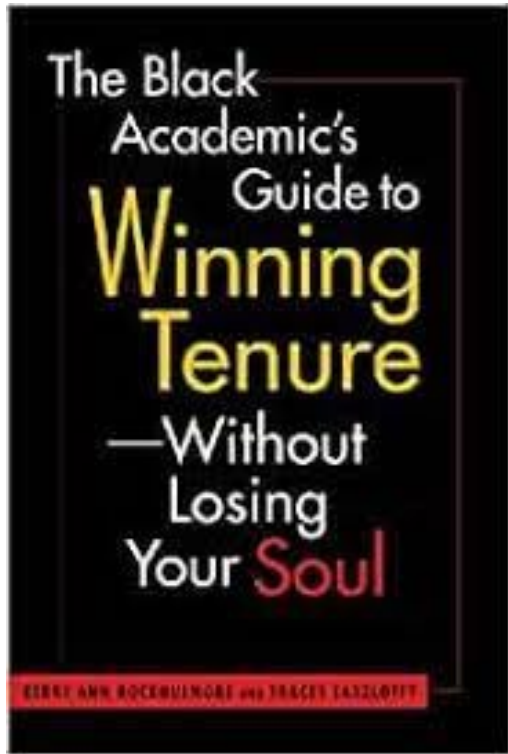
Team - be resourceful

- Leverage your academic environment
- Medical school? - Med students, medical fellows
- Post-docs (training grants) vs Tech vs grad student



Suggestions

- Identify and learn the rules and values of your institution.
- Faculty manual - become familiar with it.
- Attend faculty council meetings at least 2x/yr.
- Apply for internal grants – small wins will help build, your science, your writing, and your confidence.
- Identify ‘your’ special sauce and work with trusted groups in and outside of your institution, to build your reputation.
- Sometimes, you fail, but fail forward!
 - ***PUBLISH PUBLISH PUBLISH***



Monday
Motivator
NATIONAL CENTER FOR FACULTY DEVELOPMENT & DIVERSITY

edgeforscholars.org
CANDID COMMENTARY. GRITTY TRUTHS. SHARPEN YOUR ACADEMIC EDGE.

Thank you

*“The heights by great men reached and kept
were not attained by sudden flight, but they while
their companions slept, were toiling upward in
the night.”*

Henry Wadsworth Longfellow